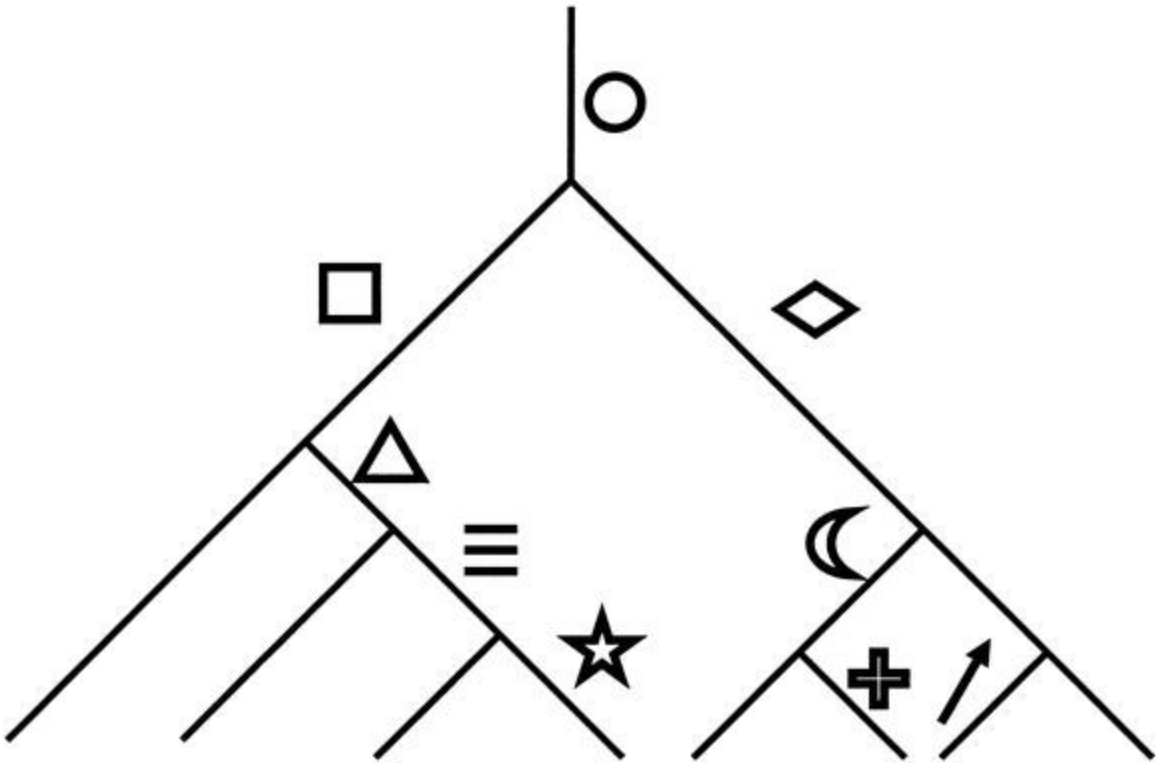
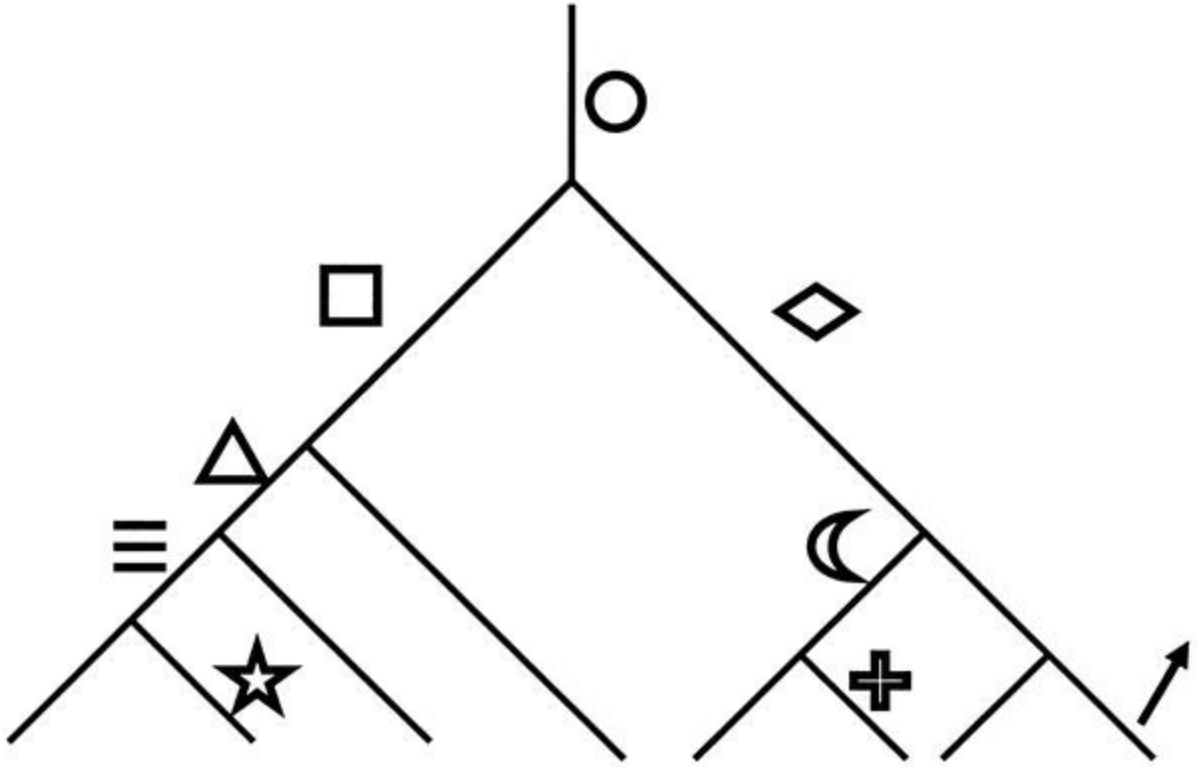


Figure 2. Two different correct answers for Part Two of the *Great Clade Race*. Each answer appears to have a different topology, but in actuality the branching orders are the same.



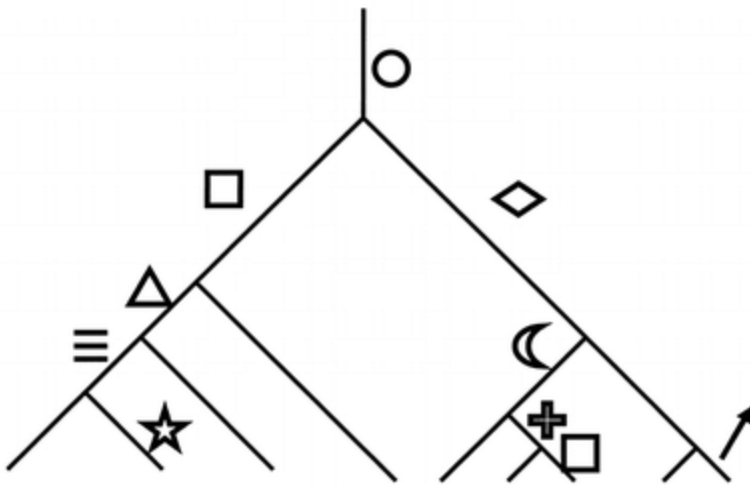
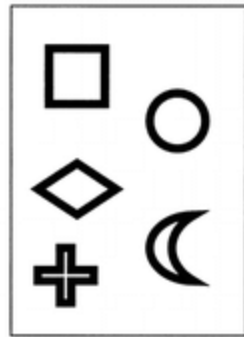


Figure 3. The ninth card and its resulting map. Incorporating this card into the exercise requires students to infer the action of homoplasy. The only way they can complete this portion of the exercise is to realize that the square stamp has “evolved” twice.

